

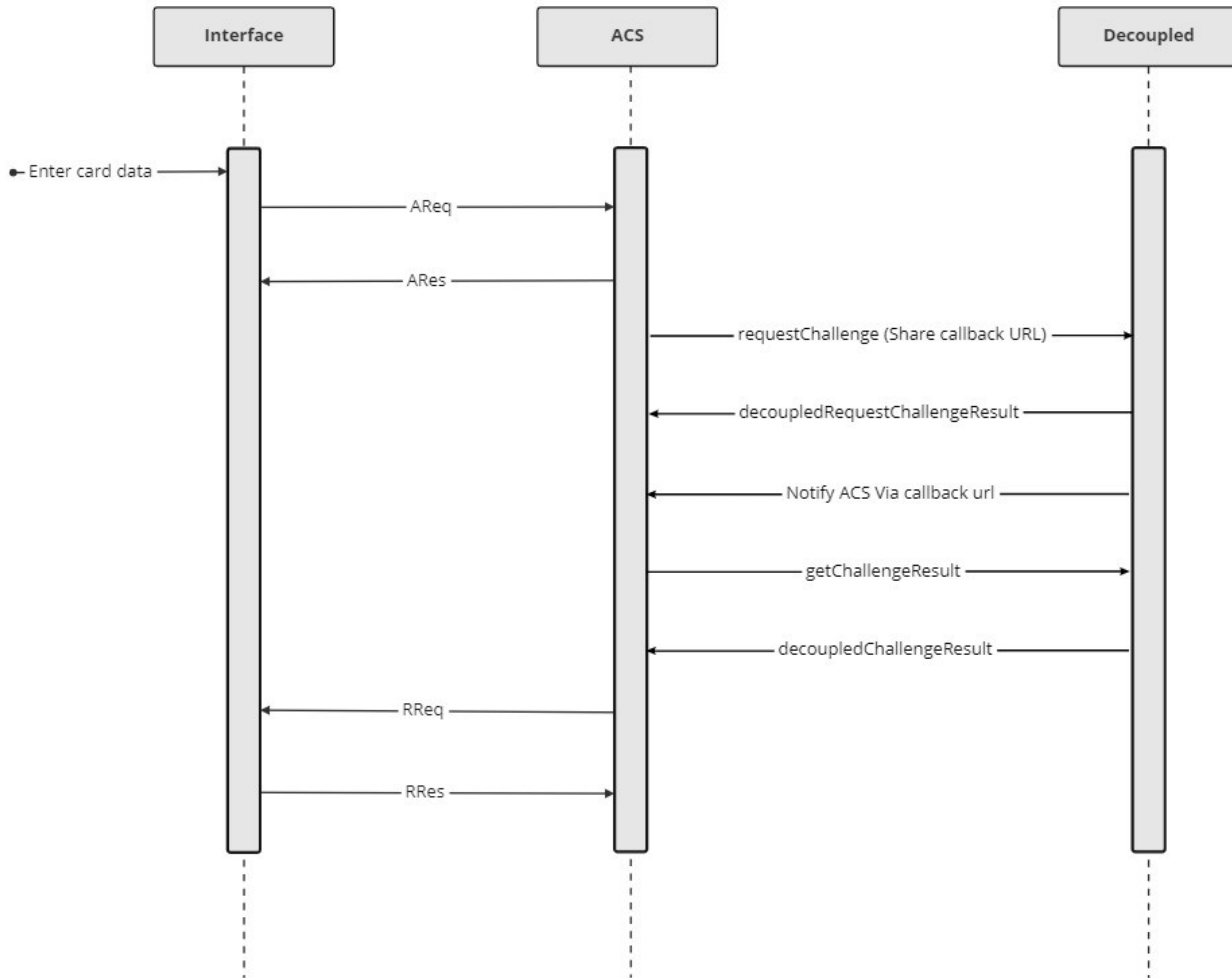
Decoupled Authentication Adapter

Adapter Loading Process

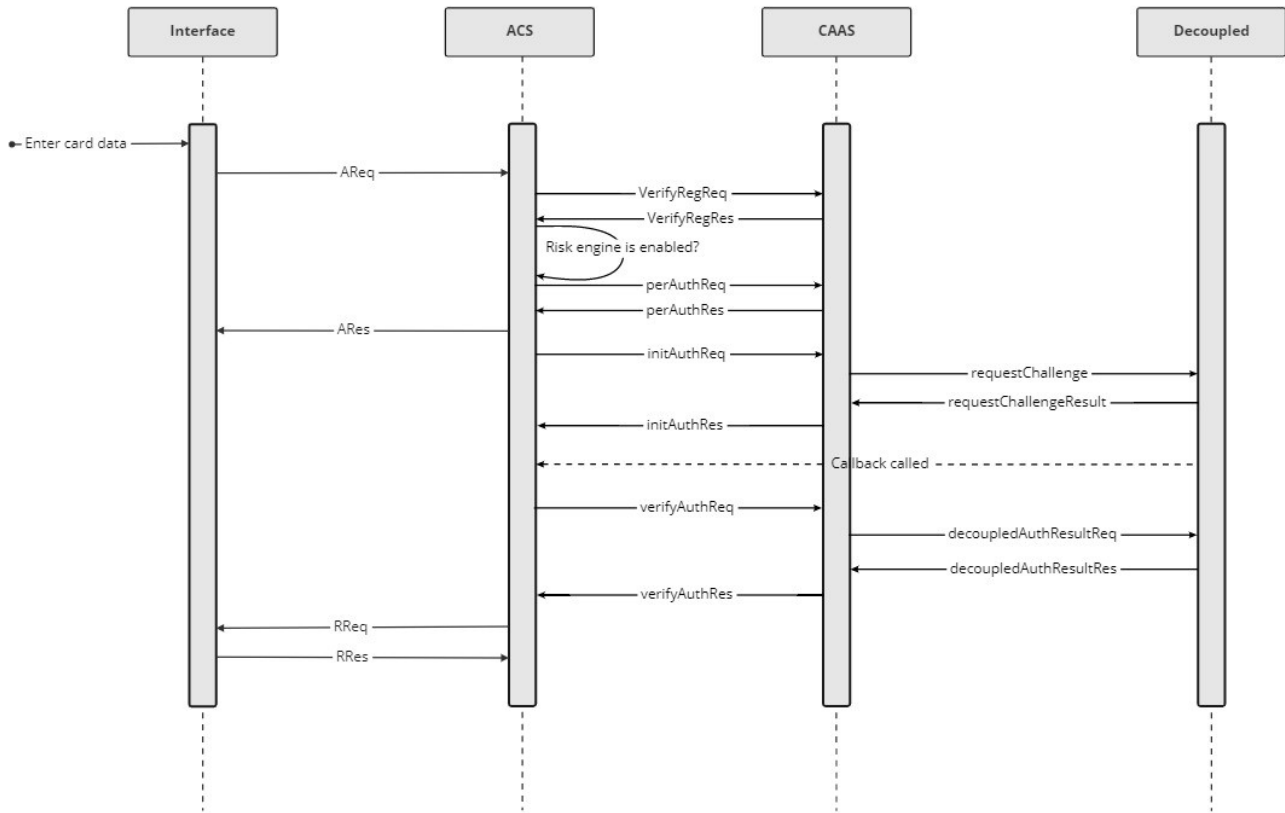
The ActiveAccess ACS performs Decoupled Authentication challenges through Decoupled Authentication Adapters, which connect an existing Decoupled Authentication system with ActiveAccess. From 3-D Secure 2.2, when Decoupled Authentication is required for challenge, the ACS triggers the external Decoupled Authentication process and performs interactions with the cardholder through Decoupled Authentication Adapters. In other words, the ACS communicates with the existing `DecoupledAuth-System` via a middle-ware, known as the Decoupled Authentication Adapter. The Decoupled Authentication Adapter can either be loaded locally by the ACS, or communicated via HTTP calls, known as the Native API and REST API versions respectively.

The following diagrams provide an overview of process for Decoupled Authentication.

Requests/Responses for Decoupled Authentication (Local Issuer)



Requests/Responses for Decoupled Authentication (RemotelIssuer)



Native API Version of Decoupled Authentication Adapter

The Native API version of Decoupled Authentication Adapter is known as `decoupledAuth.adapter` in this specification. The Native Adapters are in the form of `JAR` files. Only Java is supported for the Native API version of Decoupled Authentication Adapter.

Native Decoupled Authentication Adapter developers provide the adapters in one or more `JAR` files. The `decoupledAuth.adapter` implementation in the adapter must implement the Java interface `Adapter` which is located in the `com.gpayments.decoupled.api.v1` package.

Implementation Steps

The steps to implement a Decoupled Authentication Adapter are as follows:

1. Create a Java project and obtain the corresponding Adapter API library from the ActiveAccess package. This library contains the interface definition for

`decoupledAuth.adapter` (Native Decoupled Authentication Adapter). The library must be imported in the created project.

2. The Native API Adapter should be implemented as a service, based on the Decoupled Authentication interface `Adapter`. This specific implementation of the service is known as *service provider*. The `ACS` loads this class in startup and uses it in Decoupled Authentication. As a requirement of the `ACS`, the *provider class* must have a public zero-argument constructor so that it can be instantiated during loading.
3. A service provider is identified by placing a *provider-configuration file* in the resource directory `META-INF/services`. The file's name is the fully-qualified binary name of the service's type, e.g. `com.gpayments.decoupled.api.v1.Adapter`. The file contains a list of fully-qualified binary names of concrete provider classes, one per line. Space and tab characters surrounding each name, as well as blank lines, are ignored. The comment character is '#' ('\u0023', NUMBER SIGN); on each line all characters following the first comment character are ignored. The file must be encoded in `UTF-8`.

Adapter Interface Methods

The `Adapter` interface has four methods as follows:

- **Method Name:** `getAdapterInfo`
 - **Description:** Returns information about `decoupledAuth.adapter`
 - **Input:** This method takes no arguments
 - **Output:** An instance of `AdapterInfo` class that contains information about `decoupledAuth.adapter` should be returned. The `AdapterInfo` is explained in detail in the [AdapterInfo Data Elements](#) section.
- **Method Name:** `ping`
 - **Description:** Checks whether Decoupled-Authenticator Server is accessible or not
 - **Input:** This method takes no arguments
 - **Output:** The result of *Decoupled Authentication Server* pinging should be returned in a *boolean* value. If the server responds to *ping* successfully, `true` should be returned, otherwise `false` should be returned.
- **Method Name:** `requestChallenge`
 - **Description:** To call when Decoupled Authentication is necessary and returns whether authentication method is available for the card or not.

◦ **Input:** This method takes the following parameters:

■ **Field Name:** `acsTransactionId`

■ **Description:** Universally Unique identifier assigned by the `ACS` to identify a single transaction

■ **Length:** 36 characters

■ **Format:** String

■ **Accepted Value:** Canonical format as defined in IETF RFC 4122

■ **Message Inclusion:** Required

■ **Field Name:** `transactionInfo`

■ **Description:** Information about the transaction, which can be necessary for the Decoupled Authentication

■ **Format:** An instance of type `TransactionInfo`. `TransactionInfo` is explained in detail in the [TransactionInfo Data Elements](#) section.

■ **Message Inclusion:** Required

◦ **Output:** Adapter `requestChallenge` method has a `DecoupledRequestChallengeResult` return type

■ **Field Name:** `DecoupledRequestChallengeResult`

■ **Format:** An instance of type `DecoupledRequestChallengeResult`. `DecoupledRequestChallengeResult` is explained in detail in the [DecoupledRequestChallengeResult Data Elements](#) section.

■ **Message Inclusion:** Required

• **Method Name:** `getChallengeResult`

◦ **Description:** Checks if the card is authenticated successfully or not

◦ **Input:** This method takes the following parameters:

■ **Field Name:** `acsTransactionId`

■ **Description:** Universally Unique identifier assigned by the `ACS` to identify a single transaction

■ **Length:** 36 characters


■ **Format:** String

■ **Accepted Value:** Canonical format as defined in IETF RFC 4122

- **Message Inclusion:** Required
 - **Field Name:** `decoupledTransId`
 - **Description:** Unique identifier assigned by the `Decoupled-Authenticator-System` to identify a single Decoupled Authentication Challenge
 - **Length:** Variable, maximum 36 characters
 - **Format:** String
 - **Message Inclusion:** Optional
 - **Field Name:** `additionalInfo`
 - **Description:** Some additional Information for Decoupled Authentication
 - **Format:** JSON object of `AdditionalInfo` type. `AdditionalInfo` is explained in the [AdditionalInfo Data Elements](#) section.
 - **Message Inclusion:** Optional
 - **Output:** Adapter `getChallengeResult` method has a `DecoupledAuthenticationResult` return type.
 - **Field Name:** `DecoupledAuthenticationResult`
 - **Format:** An instance of type `DecoupledAuthenticationResult`. `DecoupledAuthenticationResult` is explained in detail in the [DecoupledAuthenticationResult Data Elements](#) section.
 - **Message Inclusion:** Required
-

RESTful API version of Decoupled Adapter

For the Restful API version of the `decoupledAuth.adapter`, a Restful API needs to be defined similar to the adapter interface. `ACS` implements the Restful client, and the `Decoupled Auth API Server` will be implemented by the client. In this case, no JARs or plugins need to be loaded by `ACS`. Clients must provide a specific URL for `ACS`, known as `Adapter-URL` in this document, and the required REST API endpoints are defined based on this URL.

 **Note**

There is also a Swagger API available for the sample REST Decoupled Adapter server and it is included in the ActiveAccess release package. To use it, run Decoupled Server in the installation package and then open `https://localhost:8448/swagger-ui.html#/` in your browser.

Get Decoupled Adapter Information

The ACS sends an HTTP request to get `decoupledAuth.adapter` information. The details of this request are:

- **URL:** `Adapter-URL /adapter-info`
- **Request Method:** GET
- **Request Parameters:** There are not any request parameters for this REST API
- **Response:**
 - **Name:** adapterInfo
 - **Format:** JSON object of `AdapterInfo`
 - **Description:** For further details on `AdapterInfo`, refer to the [AdapterInfo Data Elements](#) section
 - **Inclusion:** Required

EXAMPLE SAMPLE REQUEST

HTTP URL: `https://localhost:8448/restful-adapter/decoupled/adapter-info`

EXAMPLE SAMPLE RESPONSE

```
{
  "id" : "4740fa3f-cd6c-40d8-b795-b9768f2f4c95",
  "name" : "restful-adapter",
  "version" : "1.0.0",
  "signature" : "SIGNATURE",
  "maxAuthenticationTime" : 900
}
```

Check Decoupled Authenticator Server Availability Status

The ACS sends an HTTP request to check whether Decoupled Authenticator Server is accessible or not. The details of this request are:

- **URL:** `Adapter-URL /ping`
- **Request Method:** GET
- **Request Parameters:** There are not any request parameters for this REST API
- **Response:** If Adapter Server is accessible to perform the Decoupled Authentication challenge process, this API returns an HTTP entity with 200 (OK) HTTP status code.

Request Decoupled Authentication Challenge

ACS calls an HTTP API when Decoupled Authentication is necessary and returns whether authentication method for the card is available or not.

- **URL:** `Adapter-URL /request-challenge/{acsTransactionId}`
- **Request Method:** POST
- **Path variables:**
 - **Name:** acsTransactionId
 - **Format:** String
 - **Inclusion:** Required
- **Request Body:**
 - **Name:** transactionInfo
 - **Format:** JSON object of TransactionInfo type. For further details on TransactionInfo, refer to the [TransactionInfo Data Elements](#) section.
 - **Inclusion:** Required
- **Response:**
 - **Name:** DecoupledRequestChallengeResult
 - **Format:** JSON object of DecoupledRequestChallengeResult
 - **Description:** `DecoupledRequestChallengeResult` is explained in detail in the [DecoupledRequestChallengeResult Data Elements](#) section
 - **Inclusion:** Required

EXAMPLE SAMPLE REQUEST

HTTP URL: `http://localhost:8447/restful-adapter/decoupled/request-challenge/da3cb8f9-90a2-489b-a7af-28ba33ce924a`

```
Body: {
  "acctNumber": 4548812049400004,
  "additionalInfo": {
    "callbackUrl": "string",
    "clientId": "123456789012345",
    "deviceId": "123e4567-e89b-12d3-a456-426655440000"
  },
  "cardHolderInfo": {
    "cardholderName": "cardholderName",
    "email": "abc@example.com",
    "homePhone": {
      "cc": 61,
      "subscriber": 234567890
    },
    "mobilePhone": {
      "cc": 61,
      "subscriber": 234567890
    },
    "shipAddrCity": "shipAddrCity",
    "shipAddrCountry": "040",
    "shipAddrLine1": "shipAddrLine1",
    "shipAddrLine2": "shipAddrLine2",
    "shipAddrLine3": "shipAddrLine3",
    "shipAddrPostCode": "shipAddrPostCode",
    "shipAddrState": "VIC",
    "workPhone": {
      "cc": 61,
      "subscriber": 234567890
    }
  },
  "deviceChannel": "01",
  "issuerName": "AnyBank",
  "merchantName": "merchantName",
  "messageCategory": "01",
  "purchaseAmount": 12345,
  "purchaseCurrency": "036",
  "purchaseExponent": 2,
  "threeDSSTransID": "a4edc97f-4b89-4e52-8590-6c328f0b9648"
}
```

EXAMPLE SAMPLE RESPONSE

```
{
  "requestChallengeEnum": "OK",
}
```

```
"decoupledTransId": "0679cb73-ea9a-41fb-8fda-dec78a46cd0b",  
"message": "message example"  
}
```

Get Decoupled Authentication Result

ACS calls an HTTP API to check if the cardholder is authenticated successfully or not. The details of this REST API are:

- **URL:** `Adapter-URL /challenge-result/{acsTransactionId}/{decoupledTransId}` (or `Adapter-URL /challenge-result/{acsTransactionId}` if `decoupledTransId` is null.)
- **Request Method:** POST
- **Path Variables:**
 - **Name:** `acsTransactionId`
 - **Format:** String
 - **Inclusion:** Required
 - **Name:** `decoupledTransId`
 - **Format:** String
 - **Inclusion:** Optional
- **Request Body:**
 - **Name:** `additionalInfo`
 - **Format:** JSON object of `AdditionalInfo` type. You can find details of `AdditionalInfo` in the [AdditionalInfo Data Elements](#) section.
- **Response:**
 - **Name:** `DecoupledAuthenticationResult`
 - **Format:** JSON object of type `DecoupledAuthenticationResult`
 - **Description:** `DecoupledAuthenticationResult` is explained in detail in the [DecoupledAuthenticationResult Data Elements](#) section.
 - **Inclusion:** Required

Authentication Mechanism For the RESTful API Version

Certificate-based mutual authentication is used as the authentication mechanism for the RESTful API version. The steps are:


- The **ACS** publishes a CA for adapter communication, known as **Adapter CA**
 - The **ACS** also issues a server certificate for the adapter
 - The **ACS** uses a generated client certificate that is issued by the same **Adapter CA**
 - The Adapter server implementation must be set up with the CA and mutual authentication provided
 - The **ACS** will try to connect to the Adapter Server. If the connection can be established, then the **ACS** will continue with the adapter, otherwise it throws an error.
-

Adapter Data Elements

AdapterInfo Data Elements

- **Field Name:** **id**
 - **Description:** The **ACS** assigned *UUID* to the **Decoupled Adapter**
 - **Length:** 36 characters
 - **Format:** String
 - **Accepted Value:** Canonical format as defined in IETF RFC 4122
 - **Message Inclusion:** Required
- **Field Name:** **name**
 - **Description:** The **ACS** assigned *name* to the **Decoupled Adapter**
 - **Length:** Variable, maximum 100 characters
 - **Format:** String
 - **Accepted Value:**
 - **Message Inclusion:** Required
- **Field Name:** **version**
 - **Description:** The number that indicates the **Decoupled Adapter** API version

- **Length:** Variable
- **Format:** String
- **Accepted Value:** Supported versions can be found in [Current Supported Versions](#) section.
- **Message Inclusion:** Required
- **Field Name:** `signature`
 - **Description:** Signature to validate `Decoupled Adapter` integrity
 - **Length:** Variable
 - **Format:** String
 - **Accepted Value:**
 - **Message Inclusion:** Optional

 **Note**

This field is not currently used and is reserved for future versions.

- **Field Name:** `maxAuthenticationTime`
 - **Description:** Maximum time in minutes to wait for decoupled server to complete its authentication
 - **Length:** Variable
 - **Format:** Integer
 - **Accepted Value:**
 - **Message Inclusion:** Required

TransactionInfo Data Elements

- **Field Name:** `threeDSserverTransID`
 - **Description:** Universally unique transaction identifier assigned by the 3DS Server to identify a single transaction
 - **Length:** 36 characters
 - **Format:** String

- **Accepted Value:** Canonical format as defined in IETF RFC 4122. May utilise any of the specified versions if the output meets specified requirements.
- **Device Channel:** 01-APP, 02-BRW, 03-3RI
- **Message Category:** 01-PA, 02-NPA
- **Message Inclusion:** Required
- **Field Name:** `additionalInfo`
 - **Description:** Some additional Info for Decoupled Authentication
 - **Length:**
 - **Format:** JSON object of `AdditionalInfo` type. `AdditionalInfo` is explained in the [AdditionalInfo Data Elements](#) section.
 - **Accepted Value:**
 - **Device Channel:** 01-APP, 02-BRW, 03-3RI
 - **Message Category:** 01-PA, 02-NPA
 - **Message Inclusion:** Optional
- **Field Name:** `purchaseAmount`
 - **Description:** Purchase amount in minor units of currency with all punctuation removed. When used in conjunction with the Purchase Currency Exponent field, proper punctuation can be calculated.
 - **Length:** 48 characters
 - **Format:** String
 - **Accepted Value:** Example: If the purchase amount is USD 123.45, the element will contain the value 12345.
 - **Device Channel:** 01-APP, 02-BRW
 - **Message Category:** 01-PA, 02-NPA
 - **Message Inclusion:** 01-PA: Required, 02-NPA: Conditional
 - **Conditional Inclusion:** Required for 02NPA if 3DS Requestor Authentication Indicator = 02 or 03.
- **Field Name:** `purchaseCurrency`
 - **Description:** Currency in which purchase amount is expressed.
 - **Length:** 3 characters

- **Format:** String
- **Accepted Value:** ISO 4217 three-digit currency code; 955-964 and 999 values are excluded and not permitted.
- **Device Channel:** 01-APP, 02-BRW
- **Message Category:** 01-PA, 02-NPA
- **Message Inclusion:** 01-PA: Required, 02-NPA: Conditional
- **Conditional Inclusion:** Required for 02NPA if 3DS Requestor Authentication Indicator = 02 or 03.
- **Field Name:** `purchaseExponent`
 - **Description:** Minor units of currency as specified in the ISO 4217 currency exponent.
 - **Length:** 1 character
 - **Format:** String
 - **Accepted Value:** Number
 - **Device Channel:** 01-APP, 02-BRW
 - **Message Category:** 01-PA, 02-NPA
 - **Message Inclusion:** 01-PA: Required, 02-NPA: Conditional
 - **Conditional Inclusion:** Required for 02NPA if 3DS Requestor Authentication Indicator = 02 or 03.
- **Field Name:** `messageCategory`
 - **Description:** Identifies the category of the message for a specific use case
 - **Length:** 2 characters
 - **Format:** String
 - **Accepted Value:** 01-PA, 02-NPA
 - **Device Channel:** 01-APP, 02-BRW, 03-3RI
 - **Message Category:** 01-PA, 02-NPA
 - **Message Inclusion:** Required
- **Field Name:** `purchaseDate`
 - **Description:** Date and time of the purchase, expressed in UTC timezone.
 - **Length:** 14 characters

- **Format:** String (Date Format: YYYYMMDDHHMMSS)
- **Accepted Value:**
- **Device Channel:** 01-APP, 02-BRW, 03-3RI
- **Message Category:** 01-PA, 02-NPA
- **Message Inclusion:** 1-PA: Required, 02-NPA: Conditional
- **Conditional Inclusion:** Conditional (Required if purchaseAmount is set)
- **Field Name:** `deviceChannel`
 - **Description:** Indicates the type of channel interface being used to initiate the transaction.
 - **Length:** 2 characters
 - **Format:** String
 - **Accepted Value:** 01 (APP); 02 (BRW); 03 (3RI)
 - **Device Channel:** 01-APP, 02-BRW, 03-3RI
 - **Message Category:** 01-PA, 02-NPA
 - **Message Inclusion:** Required
- **Field Name:** `acctNumber`
 - **Description:** Account number that will be used in the authorisation request for payment transactions. It will be represented by PAN, token.
 - **Length:** 13-19 characters, or up to 72 characters when encryption for sensitive data is enabled
 - **Format:** String
 - **Accepted Value:** Format represented ISO 7812.
 - **Device Channel:** 01-APP, 02-BRW, 03-3RI
 - **Message Category:** 01-PA, 02-NPA
 - **Message Inclusion:** Required
- **Field Name:** `merchantName`
 - **Description:** Merchant name assigned by the Acquirer or Payment System.
 - **Length:** Variable, maximum 40 characters
 - **Format:** String

- **Accepted Value:** Same name used in the authorization message as defined in ISO 8583.
- **Device Channel:** 01-APP, 02-BRW, 03-3RI
- **Message Category:** 01-PA, 02-NPA
- **Message Inclusion:** 01-PA: Required, 02-NPA: Optional
- **Conditional Inclusion:** Optional but strongly recommended to include for 02NPA if the merchant is also the 3DS Requestor.
- **Field Name:** `cardHolderInfo`
 - **Description:** Information about the Cardholder, which is provided by the 3DS Requestor. For further details, refer to the [CardHolderInfo Data Elements](#) section
 - **Type:** CardHolderInfo
- **Field Name:** `issuerName`
 - **Description:** Name of the Issuer
 - **Length:** Variable, maximum 64 characters.
 - **Format:** String
 - **Accepted Value:** Any
 - **Device Channel:** 01-APP, 02-BRW, 03-3RI
 - **Message Category:** 01-PA, 02-NPA
 - **Message Inclusion:** Required

AdditionalInfo Data Elements

- **Field Name:** `clientId`
 - **Description:** Client ID
 - **Length:** 15 characters
 - **Format:** String
 - **Accepted Value:** Decimal numbers
 - **Message Inclusion:** Optional (this field will be excluded from RESTful JSON message when it has no value)
- **Field Name:** `deviceId`
 - **Description:** Device ID

- **Length:** Variable, maximum 36 characters
- **Format:** String
- **Accepted Value:** Any
- **Message Inclusion:** Optional (this field will be excluded from RESTful JSON message when it has no value)
- **Field Name:** `callbackUrl`
 - **Description:** URL to be called by `DecoupledAuth system` when Decoupled Authentication result is prepared. ACS will call `getChallengeResult` after receiving this request.
 - **Length:** Variable, maximum 2048 characters
 - **Format:** String
 - **Accepted Value:** Fully qualified URL
 - **Message Inclusion:** Required
 - **URL :** `http(s)://{sacsDomain}/acs/decouplednotify`

CardHolderInfo Data Elements

- **Field Name:** `cardholderName`
 - **Description:** Cardholder name
 - **Length:** 2-45 characters or up to 104 characters when encryption for sensitive data is enabled
 - **Format:** String
 - **Accepted Value:** Alphanumeric special characters, listed in EMVBook 4, "Appendix B".
 - **Device Channel:** 01-APP, 02-BRW, 03-3RI
 - **Message Category:** 01-PA, 02-NPA
 - **Message Inclusion:** Conditional
 - **Conditional Inclusion:** Required unless market or regional mandate restricts sending this information.
- **Field Name:** `email`
 - **Description:** The email address associated with the account that is either entered by the Cardholder, or is on file with the 3DS Requestor.

- **Length:** 254 characters
 - **Format:** String
 - **Accepted Value:** Shall meet requirements of Section 3.4 of IETF RFC 5322
 - **Device Channel:** 01-APP, 02-BRW, 03-3RI
 - **Message Category:** 01-PA, 02-NPA
 - **Message Inclusion:** Conditional
 - **Conditional Inclusion:** Required unless market or regional mandate restricts sending this information.
- **Field Name:** `homePhone`
 - **Description:** The home phone number provided by the cardholder. For further details, refer to the [HomePhone Data Elements](#) section
 - **Type:** HomePhone
 - **Device Channel:** 01-APP, 02-BRW, 03-3RI
 - **Message Category:** 01-PA, 02-NPA
 - **Message Inclusion:** Conditional
 - **Conditional Inclusion:** Required unless market or regional mandate restricts sending this information.
- **Field Name:** `mobilePhone`
 - **Description:** The mobile phone number provided by the cardholder. For further details, refer to the [MobilePhone Data Elements](#) section
 - **Type:** MobilePhone
 - **Device Channel:** 01-APP, 02-BRW, 03-3RI
 - **Message Category:** 01-PA, 02-NPA
 - **Message Inclusion:** Conditional
 - **Conditional Inclusion:** Required unless market or regional mandate restricts sending this information.
- **Field Name:** `shipAddrCity`
 - **Description:** City portion of the shipping address requested by the cardholder
 - **Length:** Variable, maximum 50 characters
 - **Format:** String

- **Accepted Value:**
- **Device Channel:** 01-APP, 02-BRW, 03-3RI
- **Message Category:** 01-PA, 02-NPA
- **Message Inclusion:** Optional
- **Field Name:** `shipAddrCountry`
 - **Description:** Country of the shipping address requested by the cardholder.
 - **Length:** 3 characters
 - **Format:** String
 - **Accepted Value:** ISO 3166-1 three-digit country code; 901-999 values are excluded and not permitted.
 - **Device Channel:** 01-APP, 02-BRW, 03-3RI
 - **Message Category:** 01-PA, 02-NPA
 - **Message Inclusion:** Optional
- **Field Name:** `shipAddrLine1`
 - **Description:** First line of the street address or equivalent local portion of the shipping address requested by the cardholder
 - **Length:** Variable, maximum 50 characters
 - **Format:** String
 - **Accepted Value:**
 - **Device Channel:** 01-APP, 02-BRW, 03-3RI
 - **Message Category:** 01-PA, 02-NPA
 - **Message Inclusion:** Optional
- **Field Name:** `shipAddrLine2`
 - **Description:** Second line of the street address or equivalent local portion of the shipping address requested by the cardholder
 - **Length:** Variable, maximum 50 characters
 - **Format:** String
 - **Accepted Value:**
 - **Device Channel:** 01-APP, 02-BRW, 03-3RI

- **Message Category:** 01-PA, 02-NPA
- **Message Inclusion:** Optional
- **Field Name:** `shipAddrLine3`
 - **Description:** Third line of the street address or equivalent local portion of the shipping address requested by the cardholder
 - **Length:** Variable, maximum 50 characters
 - **Format:** String
 - **Accepted Value:**
 - **Device Channel:** 01-APP, 02-BRW, 03-3RI
 - **Message Category:** 01-PA, 02-NPA
 - **Message Inclusion:** Optional
- **Field Name:** `shipAddrPostCode`
 - **Description:** The ZIP or other postal code of the shipping address requested by the cardholder
 - **Length:** Variable, maximum 16 characters
 - **Format:** String
 - **Accepted Value:**
 - **Device Channel:** 01-APP, 02-BRW, 03-3RI
 - **Message Category:** 01-PA, 02-NPA
 - **Message Inclusion:** Optional
- **Field Name:** `shipAddrState`
 - **Description:** The state or province of the shipping address associated with the card being used for this purchase
 - **Length:** Variable, maximum 3 characters
 - **Format:** String
 - **Accepted Value:** Should be the country subdivision code defined in ISO 3166-2.
 - **Device Channel:** 01-APP, 02-BRW, 03-3RI
 - **Message Category:** 01-PA, 02-NPA
 - **Message Inclusion:** Optional

Field Name: workPhone

- **Description:** The work phone number provided by the cardholder. For further details, refer to the [WorkPhone Data Elements](#) section
- **Type:** WorkPhone
- **Device Channel:** 01-APP, 02-BRW, 03-3RI
- **Message Category:** 01-PA, 02-NPA
- **Message Inclusion:** Conditional
- **Conditional Inclusion:** Required (if available) unless market or regional mandate restricts sending this information.

HomePhone Data Elements

Field Name: cc

- **Description:** Country Code of the number
- **Length:** 1-3 characters
- **Format:** String
- **Accepted Value:** Refer to ITU-E.164 for additional information on format and length
- **Device Channel:** 01-APP, 02-BRW, 03-3RI
- **Message Category:** 01-PA, 02-NPA

Field Name: subscriber

- **Description:** Subscriber sections of the number
- **Length:** Variable, maximum 15 characters
- **Format:** String
- **Accepted Value:** Refer to ITU-E.164 for additional information on format and length
- **Device Channel:** 01-APP, 02-BRW, 03-3RI
- **Message Category:** 01-PA, 02-NPA

MobilePhone Data Elements

- **Field Name:** `cc`
 - **Description:** Country Code of the number
 - **Length:** 1-3 characters
 - **Format:** String
 - **Accepted Value:** Refer to ITU-E.164 for additional information on format and length
 - **Device Channel:** 01-APP, 02-BRW, 03-3RI
 - **Message Category:** 01-PA, 02-NPA
- **Field Name:** `subscriber`
 - **Description:** Subscriber sections of the number
 - **Length:** Variable, maximum 15 characters
 - **Format:** String
 - **Accepted Value:** Refer to ITU-E.164 for additional information on format and length
 - **Device Channel:** 01-APP, 02-BRW, 03-3RI
 - **Message Category:** 01-PA, 02-NPA

WorkPhone Data Elements

- **Field Name:** `cc`
 - **Description:** Country Code of the number
 - **Length:** 1-3 characters
 - **Format:** String
 - **Accepted Value:** Refer to ITU-E.164 for additional information on format and length
 - **Device Channel:** 01-APP, 02-BRW, 03-3RI
 - **Message Category:** 01-PA, 02-NPA
- **Field Name:** `subscriber`
 - **Description:** Subscriber sections of the number
 - **Length:** Variable, maximum 15 characters

- **Format:** String
- **Accepted Value:** Refer to ITU-E.164 for additional information on format and length
- **Device Channel:** 01-APP, 02-BRW, 03-3RI
- **Message Category:** 01-PA, 02-NPA

DecoupledRequestChallengeResult Data Elements

- **Field Name:** `requestChallengeResultEnum`
 - **Description:** Result of requesting Decoupled Authentication challenge to `Decoupled-Authenticator-System`, that determines whether Decoupled Authentication method is available for this card or not
 - **Length:**
 - **Format:**
 - **Accepted Value:** OK, ERROR, PROGRESS, TIMEOUT
 - **Accepted Value:**
 - **Message Inclusion:** Required
- **Field Name:** `decoupledTransId`
 - **Description:** Unique identifier assigned by the `Decoupled-Authenticator-System` to identify a single Decoupled Authentication Challenge
 - **Length:** Variable, maximum 36 characters
 - **Format:** String
 - **Accepted Value:**
 - **Message Inclusion:** Optional
- **Field Name:** `message`
 - **Description:** Any required message that should be returned to the `ACS`
 - **Length:** Variable, maximum 500 characters
 - **Format:** String
 - **Accepted Value:**
 - **Message Inclusion:** Optional

DecoupledAuthenticationResult Data Elements

- **Field Name:** `DecoupledResult`
 - **Description:** Result of Decoupled Authentication challenge
 - **Length:**
 - **Format:**
 - **Accepted Value:** AUTHENTICATED, NOT_AUTHENTICATED, ERROR
 - **Message Inclusion:** Required
- **Field Name:** `message`
 - **Description:** Any required message that should be returned to the `ACS`
 - **Length:** Variable, maximum 500 characters
 - **Format:** String
 - **Accepted Value:**
 - **Message Inclusion:** Optional

+ Current Supported Versions

- 1.0.0